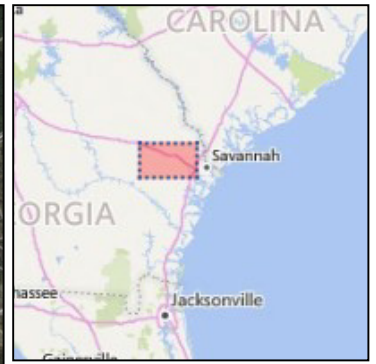
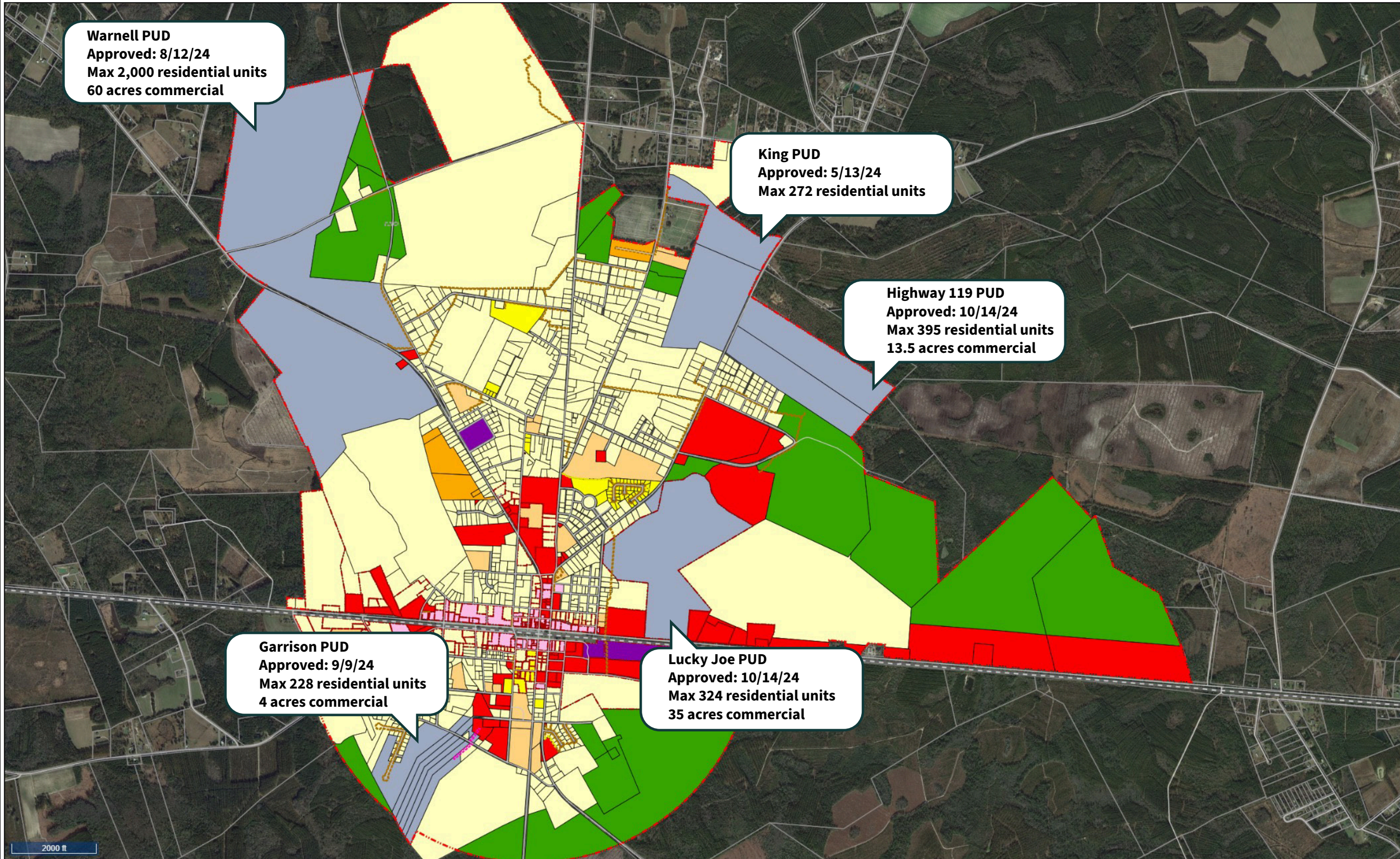




Pembroke Zoning Map 11.2024



- Legend**
- Road Names
 - Road Centerlines
 - Railroads
 - Easements
 - Access Easement
 - Common Area
 - Drainage Easement
 - Utility and Access Easement
 - Maintenance Easement
 - ROW
 - Undisturbed Buffer
 - Utility Easement
 - Wooded Buffer
 - Business District
 - Zoning
 - A-5
 - B-1
 - B-2
 - B-3
 - I-1
 - R-1
 - R-2
 - R-3
 - R-4
 - PUD
 - Parcels
 - City Boundary
 - Bryan County Boundary

Warnell PUD
 Approved: 8/12/24
 Max 2,000 residential units
 60 acres commercial

King PUD
 Approved: 5/13/24
 Max 272 residential units

Highway 119 PUD
 Approved: 10/14/24
 Max 395 residential units
 13.5 acres commercial

Garrison PUD
 Approved: 9/9/24
 Max 228 residential units
 4 acres commercial

Lucky Joe PUD
 Approved: 10/14/24
 Max 324 residential units
 35 acres commercial

2000 ft